

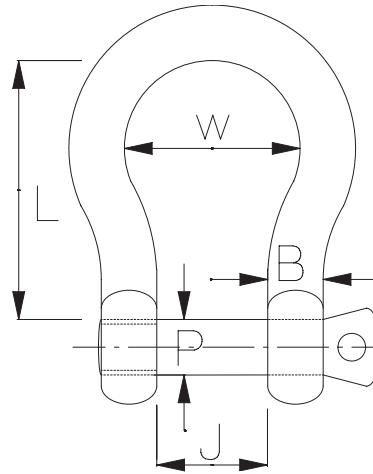
MARINE SHACKLES

Stainless Steel 316 Bow




Benefits

Contrary to upset forms produced in several press operations, electrical upsetting produces no kinks or interruption of grain flow. The surface of the shackle is free from wrinkles or burrs. The cold shank remains totally undamaged.

Even when the shackle heads are pressed into their final shape, the grain structure of the external contour retains a high degree of accuracy.



Inspection certificate BS EN10204 3.1b available on request. This must be specified at the time of order.

Shackle Pin Types		
Pin	Description	Sizes
	Standard Screw Pin	4mm to 19mm
	Shake Proof Retain Pin	5mm to 16mm
	Socket Head Pin	5mm to 19mm
Suffix Code with pin type. No Suffix - Standard Pin RS - Shake Proof Pin C - Socket Head Pin		

Stainless Steel 316 Bow Shackles							
Product Code	Pin P	Body B	Jaw J	Bow B	Inside L	M.B.L. *	Weight
B04	4mm	4mm	8mm	12mm	18mm	600kgs	9g
B05	5mm	5mm	10mm	16mm	22mm	1200kgs	14g
B06	6mm	6mm	13mm	19mm	28mm	1600kgs	28g
B08	8mm	8mm	16mm	25mm	35mm	2400kgs	59g
B10	9.5mm	9.5mm	19mm	28mm	38mm	3800kgs	106g
B11	11mm	11mm	22mm	33mm	46mm	4800kgs	161g
B12	12.7mm	12.7mm	26mm	38mm	52mm	6000kgs	270g
B16	16mm	14.3mm	29mm	43mm	60mm	8000kgs	500g
B19	19mm	16mm	32mm	50mm	68mm	10000kgs	630g

Larger shackles manufactured to order.

* typical minimum breaking

Refer to shake proof and socket head shackle specification sheet for details of pins. Specialist shackles to OEM design also available. Contact our sales department for a very competitive quote.